

EAGLE Aluminum Signal 16-inch Pedestrian

Features

Meets or exceeds ITE specifications.

Design provides minimum weight but maximum rigidity and strength.

HOUSING -- One piece die-cast unit with serrations in 5° increments at each end. Each housing has provisions for mounting two terminal blocks.

DOOR -- One piece die-cast aluminum unit equipped with stainless steel hinge pins. Two stainless steel captive eyebolts and wing nuts permit easy access to the inside of the housing.

VISOR -- One piece formed eggcrate visor is secured with stainless steel hardware. Tunnel visors are available.

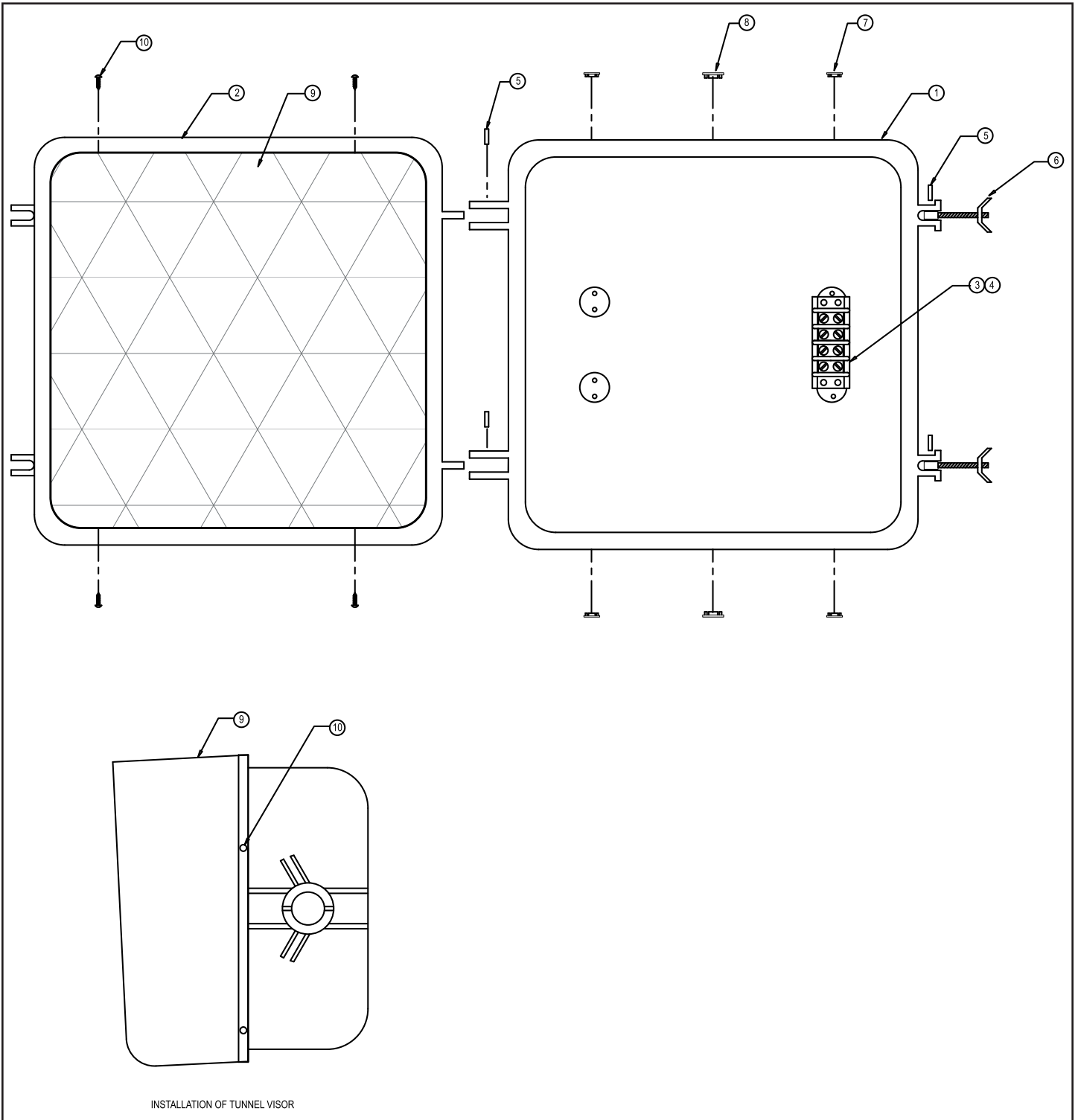
LENS -- Housing is designed to accommodate 16-inch LEDs.

GASKETS -- Weathertight quality of the unit is assured by separate lens and door gaskets.

POSITIVE POSITIONING -- Positive positioning and locking is achieved through the use of serrated brackets.

MOUNTING -- Completely compatible with all standard signal hardware.





Pedestrian Signal Diagram (16-inch Aluminum)

16" PED REPLACEMENT PARTS

Ref. No.	Description	Part Number	
		Standard	Maintenance
1	Signal Housing	FKC06153S-XX	FKC06153M-XX
2	Door	FKC06154-XX	FKC06154-XX
3	4 Pos Terminal Block	A182944	A182944
4	TB Screw 8-32X5/8	116804	116804
5	"U" Spirol Pin	A144006	A144006
6	Wing Nut Assembly	PEX06224P001	PEX06224P001
7	3/8" Dia Black Hole Plug	N/A	PHP006157
8	3/4" Dia Black Hole Plug	N/A	PHP006158
9	Visor		
	Eggcrate	A70012303	A70012303
	Tunnel	A852309-XX	A852309-XX
10	Visor Screw 8-32		
	Eggcrate	PEX06170P001	PEX06170P001
	Tunnel	133029	133029

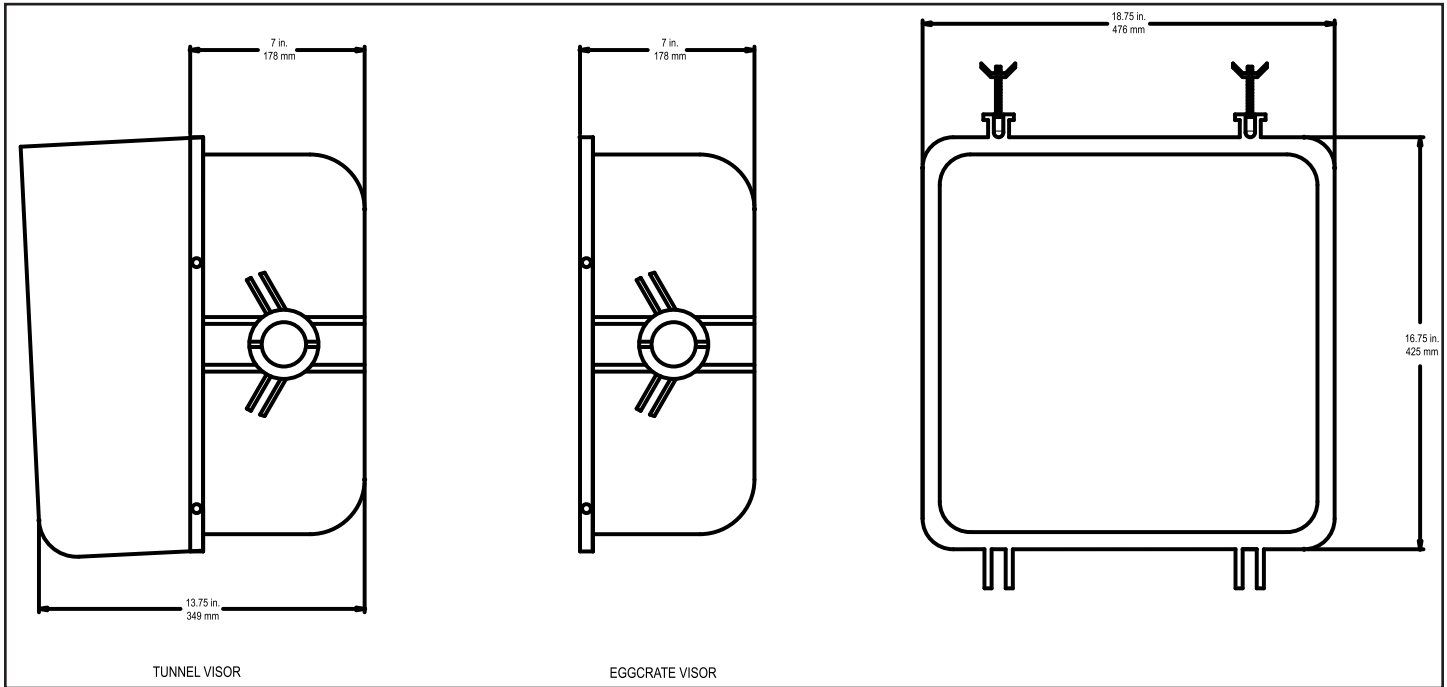
COLOR CODES

XX	Color
10	Medium Green
11	Dark Green
12	Yellow
13	Gloss Black
14	Flat Black

Note: Eggcrate Visors offered in Flat Black only.

WEIGHTS

With Tunnel Visor	12 lbs. (5.45 kg)
With Eggcrate Visor	12 lbs. (5.45 kg)
Housing	8 lbs. (3.64 kg)
Door	2 lbs. (.91 kg)



Pedestrian Signal Visor Options

The LED housing is a one piece die-cast aluminum alloy, with two integrally-cast hinge lugs, screw slots, and openings at each end. The openings will accommodate standard 1.5" pipe brackets. The bottom opening of the housing has an integrally-cast Shurlock boss. The radial angular grooves of the Shurlock boss provide 5° increments position of the signal, to eliminate rotation or misalignment of the signal.

The housing is available with a knock-out plug at the top and bottom. This plug eliminates the need for additional hardware to close these openings when using a clamshell or post-top mounting bracket.

The swing-down-door is a single piece die-cast aluminum alloy, with two hinge lugs cast on the top of the door, and two latch points on the bottom. The door is attached to the bottom of the housing using two hinge pins. Two eye bolts and wing nuts on the top allow the door to be opened and closed without the need for special tools.

The egg crate visor option is designed to eliminate sun phantom and minimize damage to the LED. The egg crate visor is inserted through the back side of the door and it overlaps by 1/2 inch. It is sealed when the door is closed, which prevents light from escaping between the visor and the door.

For more advanced future features and/or more information on Siemens products call (512) 837-8310 or call your local dealer (see website for the dealer in your area).

Siemens reserves the right to alter any of the Company's products or published technical data relating thereto at any time without notice.

Siemens Energy & Automation, Inc.
Business Unit Intelligent
Transportation Systems

8004 Cameron Road
Austin, TX 78754
Ph: (512) 837-8310
Fax: (512) 837-0196
<http://www.itssiemens.com>

SIEMENS