

Intuicom™ Broadband Solutions

Providing Reliable, High-Speed Connectivity Across Multiple Locations



SA (STAND-ALONE) UNIT



ACCESS POINT CLUSTER



INTEGRATED UNIT

Intuicom's Broadband Solutions provide the connectivity and remote access with a family of robust and secure products that have proven themselves across industries, environments and markets. Intuicom's Broadband solutions provide the highest data rates with the most robust industry established security features. Designed for high-bandwidth, long-range industrial applications, Intuicom's Broadband products provide exceptional performance for most any application.

Intuicom Broadband Solutions

FUNCTIONALITY AND FLEXIBILITY

Intuicom Broadband Solutions emphasize “Keep it Simple”. Each unit is universally configurable as either an access point or endpoint, and each unit can operate within either point-to-point, point-to-multipoint, or Mesh topologies. Intuicom’s Broadband products are available in Stand-alone (SA), Integrated, or Access Point Cluster configurations. Configuration and setup are straight forward and our tools provide the means to get a system up and running quickly. Our solutions offer flexible configuration options to meet the needs and expectations across a broad spectrum of environments and applications.

RELIABLE, PROVEN SOLUTIONS

With proven performance in dense RF environments, Intuicom’s wireless networks power through the congestion to provide reliable connectivity where other technologies fall short.

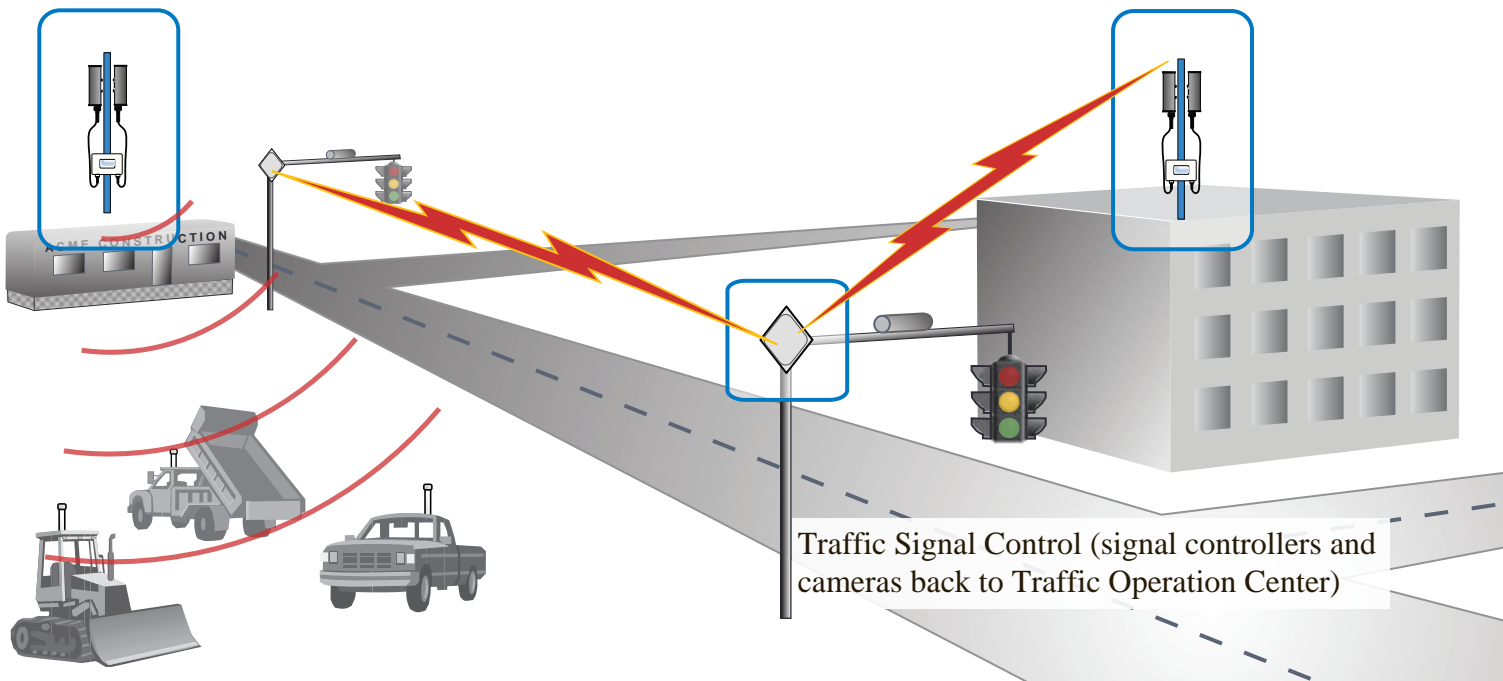
MULTI BAND ACCESS AT MAXIMUM SPEEDS

Intuicom’s Broadband Solutions offer upload and download speeds that lead the industry. With up to 108 Mbps of available bandwidth, Intuicom’s Broadband Solutions are capable of meeting the highest bandwidths available.

Intuicom’s Broadband family provides wireless access in a wide variety of spectrum options - including 700 and 900 MHz, 2.4, 4.9, 5.1-5.9 GHz and helps ensure exceptional performance no matter which spectrum is best for your networks. Multiple bands are available in a single Access Point Cluster (1-4 unique bands) to maximize performance and flexibility.

Point to Multi-point
Wireless for job site
communications

Access Point Cluster (1-4 Units)
using a SA unit and multiple
sector antennas

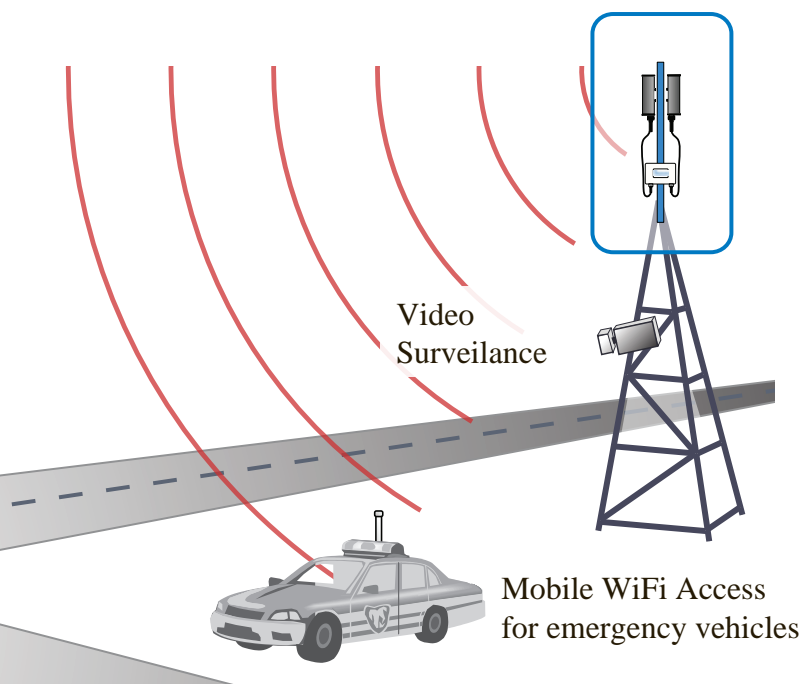


BEST IN CLASS PERFORMANCE & SECURITY

Utilizing “best-in-class” technology, Intuicom Broadband leads the marketplace in performance and efficiency. Utilizing dynamic frequency selection and optimizing bandwidth allocation, our solutions are inherently resistant to interference from other RF equipment. In addition, our security features WEP, WPA and WPA2 (with AES and TKIP) encryption to assure the safe, secure connectivity. Other features include SNMP and QoS as well as MESH networking, peer isolation and bi-directional multicast support.

EXCEPTIONAL ENVIRONMENTAL REQUIREMENTS

Intuicom’s wireless solutions operate in the most extreme environments on the globe. From the Arctic Circle to the deserts of North Africa, Intuicom has established a reputation for delivering remote access in the most challenging environments. We have applied that same approach with our Broadband Solutions which are designed to operate in the most extreme environments including those that require we meet or exceed -40°C to $+80^{\circ}\text{C}$.



APPLICATIONS



Traffic Signal Control

Interconnecting of traffic signals, accessing video detection/ surveillance data and providing city-wide Wi-Fi connectivity are all available through Intuicom broadband solutions.



Video Surveillance

Security cameras, traffic monitoring systems, alarm systems, operational surveillance, perimeter monitoring, individual and public safety are all applications that benefit from our reliable and cost-effective solution.



Job Site WiFi

Construction sites and large scale facilities are the production floors in the field. Improve productivity with connectivity for file transfer, E-mail, SMS, internet access, database access and general LAN interfacing through Intuicom’s broadband solutions.



Wireless Backhaul Link

Providing high band-width remote connectivity to SCADA systems, backhauling data, building to building connectivity, T1/E1 replacement, and remote monitoring.



Mobile WiFi Access

Local hotspot access, remote connectivity, and data systems access are proven available with Intuicom’s solutions for corporate and public safety applications.



Intuicom Broadband Solutions

Providing Reliable, High-Speed Connectivity Across Multiple Locations

GENERAL SPECIFICATIONS

	SA - Stand Alone with External Antenna	Integrated Antenna
Enclosure	Ruggedized Extruded Aluminum	Ruggedized Extruded Aluminum with polycarbonate radome
Size	8.25" x 5.95" x 2.30"	13.3" x 13.3" x 1.7" (4.9 - 5.8 GHz) 9.85" x 10.25" x 2.7" (2 - 4 GHz)
Weight	3.75 lbs.	5.15 lbs.
Environmental	IP 66 RoHs compliant	IP 66 RoHs compliant
Operating Temperature	-40° C to +80° C (optimized for lo/hi-temp)	-40° C to +80° C (optimized for lo/hi-temp)
Antenna	Omni, Sector on Panel	Integrated flat panel
Interface	RJ45, 10/100 Base-T Ethernet	
Mode	Access Point, End Point Repeater, MESH	
Topologies	Point-to-Point; Point-to-Multipoint; MESH	

WIRELESS TRANSCEIVER

Security	WEP, WPA, WPA2 (including AES and TKIP)
Networking Features	Spanning Tree Protocol, DHCP, SNMP, Routing, QOS (802.11e/WMM), Peer Isolation and Bidirectional Multicast support
Utilities	Site Survey Tool, Antenna Alignment Tool, Discovery Utility
Wireless Approvals	FCC Part 15, IC RS210

INTUICOM QUICK TURN-ON KITS

All Intuicom Broadband units include	POE Injector with surge protection 160 feet of Cat.5 or better Industrial Outdoor rated cable Pole Mounting Hardware Intuicom's highly recognized support
--------------------------------------	--

To learn more about enabling wireless networking for your applications, please contact us at: info@intuicom.com or call (303) 449-4330

INTUICOM RADIOS REQUIRE PROFESSIONAL INSTALLATION

INTUICOM INC.
1880 SOUTH FLATIRON COURT • BOULDER, CO 80301 • USA
T: 303-449-4330 • F: 303-449-4346
E-mail: info@intuicom.com • www.intuicom.com

