

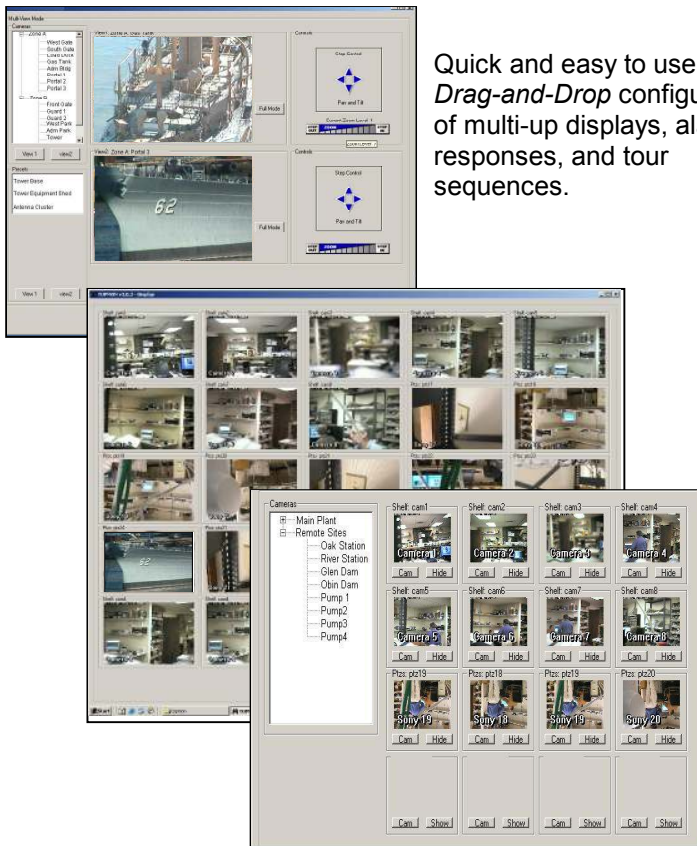
VSS-4000 Series

View Station Software



Industrial Video and Control

View Station Software enables up to 25 cameras to be displayed on each of multiple monitors. It can cause the views to “Tour” selected preset views from any number of cameras on one or more schedules. It can provide alarm management from any number of cameras. While the IVC Relay Server software enables any of the cameras to be viewed via browser from any PC via password, the View Station Software provides comprehensive management of multiple cameras at one or more centralized view stations.



Quick and easy to use *Drag-and-Drop* configuration of multi-up displays, alarm responses, and tour sequences.

Features

Configurable Multi-up Displays

Display any number of video feeds up to 25 feeds on each of multiple monitors. Use any size LCD, plasma, CRT or any other PC monitor. No special CCTV monitors are required. Click on any of the feeds and a full screen video control panel appears for that feed.

Camera Touring

Create tours of preset views that are displayed sequentially and on multiple schedules to accommodate weekdays, weekends, after hours, etc.

Alarm Management

Cause PTZ cameras to move and zoom to designated views upon alarm, capture snapshots or video segments, issue audible and visual alarms and record the alarm events into an alarm log.

Recommended PC Specifications

CPU: Intel or AMD Pentium III 1.0 GHZ
RAM: 512 MB
Hard Drive: 60 GB
OS: Windows 2000 Pro

Consult factory for PC requirements based on your application.

VSS-4000 Series

VSS-4004 Supports up to 4 cameras
VSS-4008 Supports up to 8 cameras
VSS-4016 Supports up to 16 cameras
VSS-4024 Supports up to 24 cameras
VSS-4099 Supports unlimited cameras