

SMART STREETLIGHT CONTROLLER MODEL 2.0



The Next Generation in Streetlight Control

Plug and Play streetlight photocell replacement providing advanced light control, voltage detection, utility grade metering, tilt/vibration sensing and connections to smart city sensors services

Unique Features

- PWM, 0-10V, DALI Dimming protocols, plus newly introduced DALI2
- Built in GPS and celestial clock
- Simultaneous monitoring of power usage and quality for line and load
- Power loss communicates last known state after power outage
- LTE Data communications



Advanced Light
Control, Monitoring
& Metering



Sensors &
Applications

Compatible with 360M+ Streetlights Worldwide



SMART STREETLIGHT CONTROLLER MODEL 2.0

Integrates Seamlessly with Existing Streetlight Infrastructure



Operations & Maintenance

- Advanced light control
- Utility metering
- Power loss detection
- High accuracy tilt, vibration and knock-down detection



Location-Based Services

- Pedestrian movement
- Vehicle movement
- Congestion level/dwell time
- Beacon triggers



Simplified Installation

- Plug and play
- Auto carrier configuration
- Auto firmware update
- No more mounted gateways



Global/Universal Compatibility

- All LED or HID streetlights
- All 3,5 and 7 pin streetlights
- All dimming protocols PWM, 0-10V, DALI, DALI2
- All voltage ranges (120v to 480V)
- LTE communications



Sensor Connectivity

- Every streetlight is a smart city area
- 2 wire connections for power/data
- 2-way communications for sensor calibration
- Sensor data aggregation



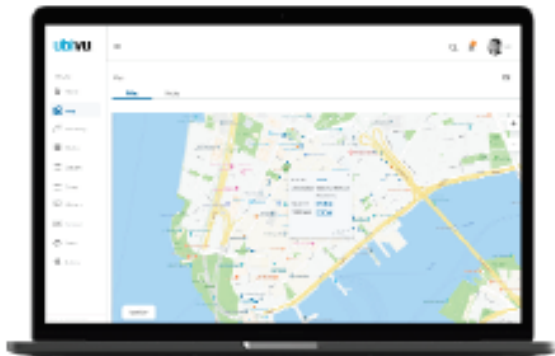
Color Options

- Available in gray, black, green and bronze to complement existing streetlight fixtures and align with city beautification standards



Complete Asset Management

- GPS data mapping of inventory
- Alert threshold management
- Schedule convenience



ubivuTM

Streetlight Control Platform

- Secure administration via Ubivu
- View map, tiles and table formats
- API connectivity option
- Alarms trigger alerts

SMART STREETLIGHT CONTROLLER MODEL 2.0

Features & Benefits

Features

- ✔ Single sku 120v to 480v operation
- ✔ Pwm, 0-10v, dali, dali2 dimming
- ✔ Satellite gps and celestial clock
- ✔ Simultaneous monitoring of power usage and quality for line and load
- ✔ High accuracy tilt and vibration sensor
- ✔ Power loss and non-volatile memory
- ✔ LTE communications
- ✔ OTA updates
- ✔ 10-year warranty

Benefits

- ✔ One controller for any streetlight
- ✔ Auto configures for any driver
- ✔ Accurate GPS coordinates with sunrise/sunset offset
- ✔ Metering both sides of the circuit
- ✔ Pole and streetlight condition beyond knockdown
- ✔ Last state communicated with permanently stored data
- ✔ Global operation wherever there is mobile coverage
- ✔ OTA updates in minutes
- ✔ Coincides with streetlight warranty

Simply connected, simply smart