



# Yutrafic Studio

One overarching management platform for seamless integration of multiple systems

YUNEX  
TRAFFIC





## The mobility revolution is ongoing, and cities need to react

It is time for smart mobility infrastructure, more CO<sub>2</sub> reduction, and safer, more livable cities. We are meeting our responsibility with the most comprehensive end-to-end portfolio of transportation management solutions on the market.

Introducing Yuttraffic Studio from Yunex Traffic, a next generation platform that was developed to face the challenges all cities—whether big or small—are up against. A Smart City needs a system that enables transportation management that responds to issues quickly, effectively, reliably, and safely. Yuttraffic Studio does just that and is accompanied by high quality performance in planning, monitoring, managing, and optimizing cities from anywhere in the world.



# Yuttraffic Studio

## Next generation transportation management platform



Yuttraffic Studio is one overarching management platform for seamless integration of multiple systems. Put your data to use to create not only smart cities—but safe, efficient, and clean cities. Yuttraffic Studio enables comprehensive transportation management use cases for cities of all sizes—from simple field device monitoring to complex environmental traffic management.

### Monitor, control, and optimize traffic light systems in real time

Control traffic lights in your network dynamically while optimizing traffic flow. Define dynamic thresholds to adapt your traffic light control to the current traffic volume in real time or inform maintenance and service teams and immediately transmit the status of the affected systems.

Yuttraffic Studio supports you with intuitive dashboards and diagrams, so that you can always keep an eye on the status of your traffic lights—including information on functions such as green wave, circuit diagrams and public transport prioritization.

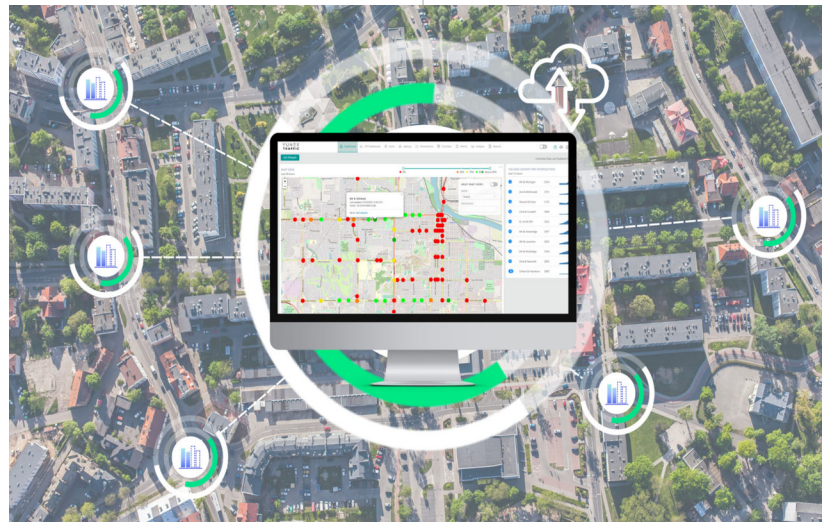
### Directly measure what previously could only be estimated and modeled

Yuttraffic Studio seamlessly integrates with our Advanced Traffic Signal Performance Monitoring (ATSPM) platform, Yuttraffic Insights, to provide comprehensive traffic management solutions that allows transportation agencies to not only efficiently manage traffic flow but also gain valuable insights into signal performance. This integration enables real-time monitoring of signal performance, identifying issues and optimizing signal timings for enhanced traffic flow. The combination of Yuttraffic Studio and Yuttraffic Insights empowers agencies to make data-driven decisions, reduce congestion, and improve overall transportation efficiency.



### Keep transit vehicles moving

Give transit the green light. With Yuttraffic Studio, transit agencies can seamlessly integrate TSP strategies into their traffic management operations. Our user-friendly interface allows agencies to define specific routes and schedules for priority vehicles, ensuring they encounter minimal delays at signalized intersections. Through real-time communication with traffic signals and transit vehicles, ATMS Studio dynamically adjusts signal timing to accommodate priority requests.



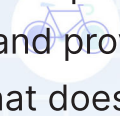
### Optimize traffic control and enhance communication with drivers

Yuttraffic Studio continuously collects, processes, and analyzes real-time traffic data, enabling traffic managers to make informed decisions about when and what messages to display to Digital Message Signs (DMS). This integration ensures that signage conveys accurate and timely information to drivers on traffic delays or hazardous road conditions.

## Uniting what's next in traffic.

## Yuttraffic Studio

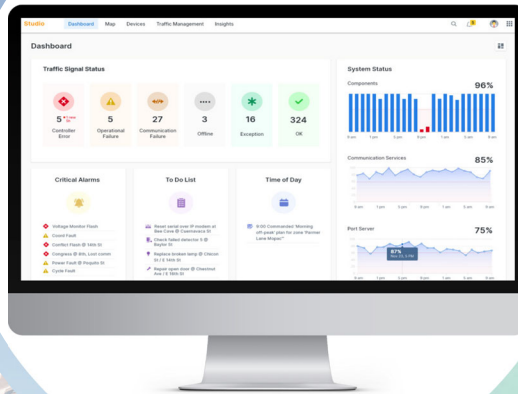
One transportation management platform—endless possibilities



Today the comprehensive platform takes a **modern** approach to traffic management with a microservice architecture that supports multiple applications and solutions and provides **ONE** comprehensive system, that does more than traffic control. It helps cities become **safer**, more **efficient**, and **cleaner**. This single platform is ready to tackle today's transportation challenges and achieve tomorrow's smart city goals.

The cities of tomorrow will become more **connected**. The data we are collecting will continue to drive **future** applications. Yuttraffic Studio is ready for these challenges and our team is developing applications now.

Because **Smart Cities** require the **smartest** technologies.





# Yuttraffic Studio

Built for tomorrow, today

## Environmental Traffic Management

With Yuttraffic Studio, cities can prevent high emissions values. This is achieved through emission modeling and forecasting for a comprehensive emissions overview, even without physical detectors in the field. Yuttraffic Studio also enables the proactive detection of critical emissions situations for effective traffic management.

## Multimodal Traffic Management

Yuttraffic Studio supports traffic management which includes different modes of transport such as rail, bus and other mobility services. Our system acts as a collaborative platform for traffic operators and allows combining data from different systems to create a holistic visualization of the current traffic situation. This allows taking proactive measures to improve traffic flow.

## Connected Vehicle

Yuttraffic Studio supports seamless communication with connected vehicles thanks to numerous integrated functionalities. This extends the reach of your traffic management and supports mobility participants with up-to-date data on the traffic situation. Roadside units of different manufacturers can be used to send hazard warnings directly to vehicles and the drivers to decrease response times.



## Simulation and Prediction

Our Yuttraffic Studio platform harnesses the power of real-time traffic simulation and prediction. This integration allows transportation authorities to accurately model and forecast traffic conditions, enabling proactive responses to congestion, incidents, and special events. Yuttraffic Studio's user-friendly interface provides access to Aimsun Live's predictive capabilities, empowering traffic managers to make informed decisions based on accurate simulations. This combination of technologies not only enhances traffic management but also supports effective planning and resource allocation, ultimately contributing to safer and more efficient urban mobility solutions.

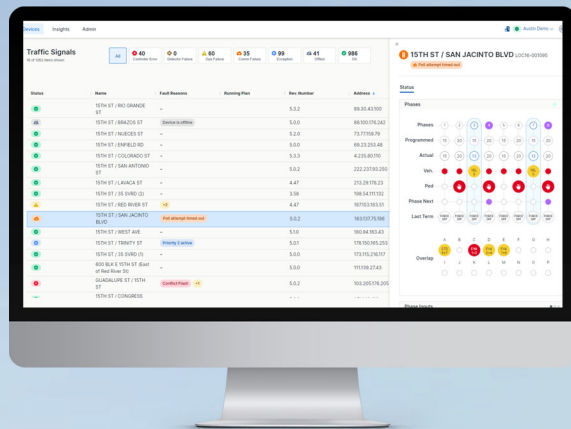
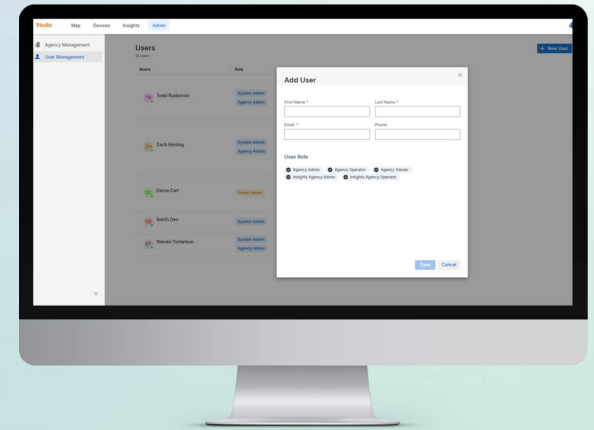
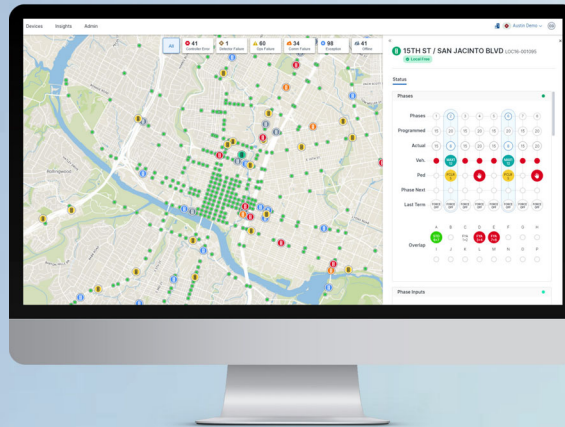


Powered by



# Yuttraffic Studio

Innovative solutions for smoother, safer, and greener city mobility



**Keep our cities moving**

Stay ahead of congestion and proactively act for both planned and unplanned disruptions.



**Keep our cities green**

Monitor and control emissions to keep them below acceptable thresholds.



**Keep our cities safe**

Coordinate complex mobility landscapes with multiple operators in a multimodal environment to ensure quick incident responses and safety for all road users.

# Yuttraffic Studio

## Customer-driven innovation: Transforming traffic management

At Yunex Traffic, we've re-imagined traffic management with a keen ear to our customers' needs, prioritizing features that the industry is eagerly seeking. Our commitment to excellence goes beyond the known boundaries, and Yuttraffic Studio embodies the ethos from day one. By actively listening to our customers, we've crafted a solution that not only excels in what we do best but also adapts and evolves with the ever-changing landscape of transportation management. Yuttraffic Studio offers your city a wealth of key benefits, tailored to your specific requirements.

### Enable Scalability

Built on state-of-the-art technology for secure development, deployment, and operations. Easily integrate external data sources, 3rd party apps and share data.

### Enhanced Cybersecurity

Yuttraffic Studio's enhanced cybersecurity features encompass encryption, secure user authentication, and continuous monitoring to detect and respond to

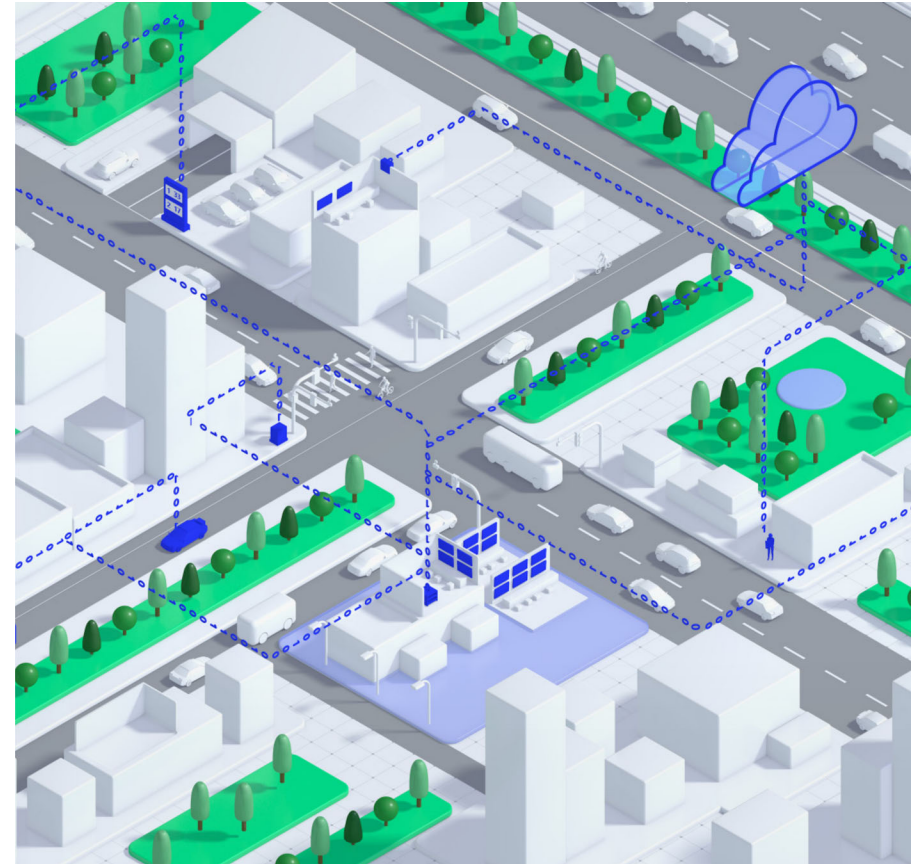
any suspicious activities. By aligning with stringent government standards such as FIPS 140, Yuttraffic Studio provides our clients with the assurance that their data and operations are protected at the highest level, exemplifying our unwavering commitment to data security within the ITS industry.

### Improved User Experience

We prioritize user needs and workflows, making the traffic management process efficient and intuitive. Yuttraffic Studio's thoughtful UX design ensures that traffic professionals can easily access and utilize its powerful features, ultimately contributing to better decision-making and more effective traffic management strategies.

### Ease of Operations

SSO streamlines access to our platforms and services, allowing user to authenticate once and seamlessly navigate across multiple applications, saving time and reducing password-related hassles. This feature enhances data security and simplifies user onboarding and offboarding.



### Why SaaS?

SaaS solutions provide scalability, security, and an improved user experience, revolutionizing transportation management as we know it today. With SaaS solutions, public authorities can swiftly adapt to changing industry demands, and have access to cutting-edge technology without the burden of managing complex infrastructure. Moreover, SaaS platforms often incorporate regular updates and enhancements, ensuring that latest features and security measures are accessible. This not only streamlines operations but also promotes collaboration among different stakeholders.

### Find your balance with our platform for holistic mobility and traffic management

Create a solid basis for traffic and mobility management in your city now. Together with you, we will put together a solution that provides exactly the functions you need—and with which you are also optimally prepared for future challenges.



# Let's shape the future of mobility together!

Yunex, LLC  
9225 Bee Cave Rd.  
Building B, Suite 201  
Austin, TX 78733  
**[us.yunextraffic.com](https://us.yunextraffic.com)**

Yunex Traffic is a global leader in the field of intelligent traffic systems, offering the widest end-to-end portfolio of solutions for adaptive traffic control and management, highway and tunnel automation, as well as smart solutions for V2X and road user charging tolling. Yunex Traffic has 3,100 employees from 58 nations and is active in over 40 countries worldwide. Its intelligent mobility solutions are currently being used in major cities across the world, including Dubai, London, Berlin, Bogota, and Miami. Yunex Traffic has successfully concentrated its efforts on mastering technologies in the three segments of hardware, software, and service, and is subsequently the only supplier who is capable of meeting all major regional standards in Europe, UK, Asia and America. Further information is available at [us.yunextraffic.com](https://us.yunextraffic.com).